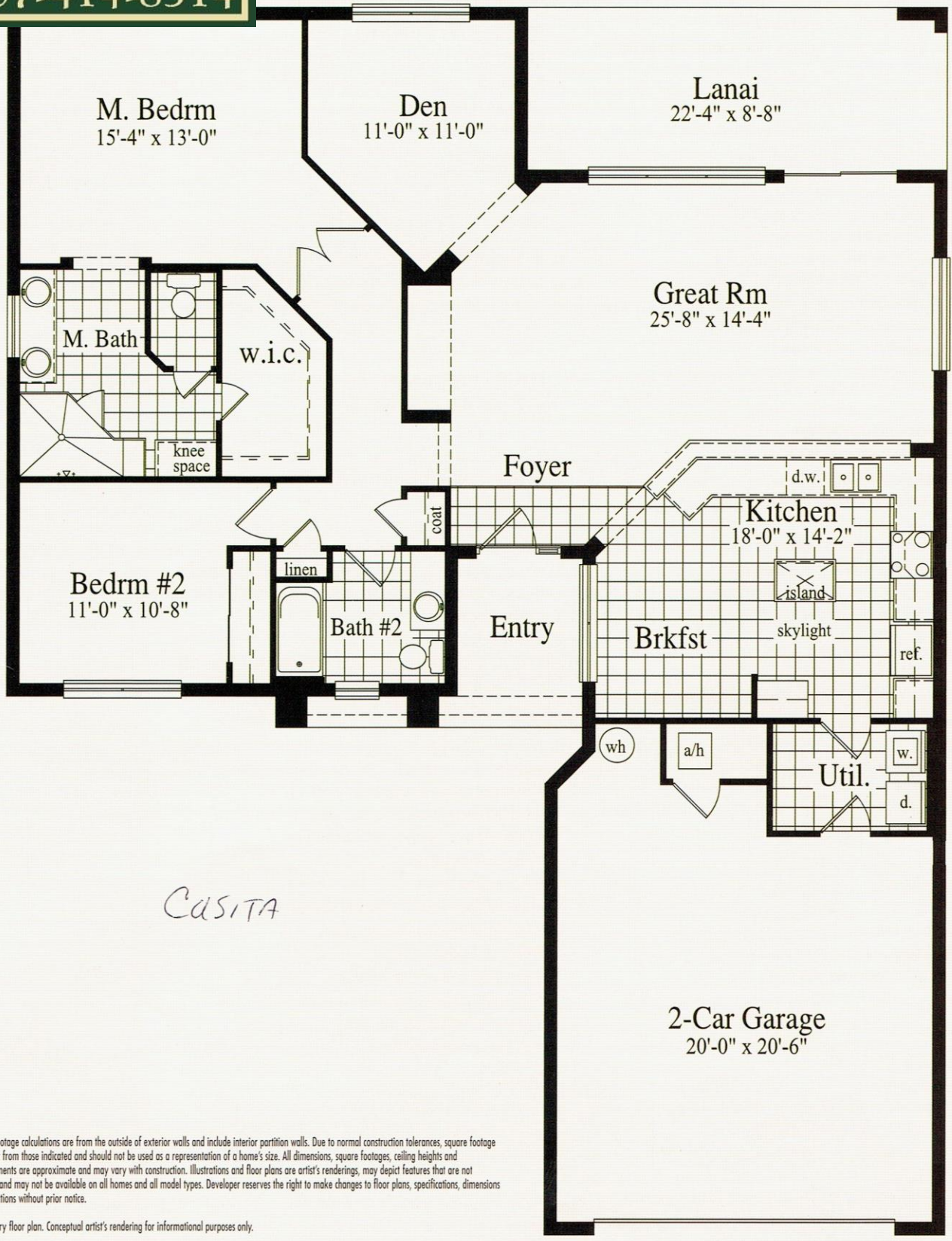


Solivita
FOR SALE
 Charles Rutenberg Realty
 Al Alvarez - SolivitaSales.com
 407-414-8514

1676 Sq. Ft.

Bal Harbour



Square footage calculations are from the outside of exterior walls and include interior partition walls. Due to normal construction tolerances, square footage may vary from those indicated and should not be used as a representation of a home's size. All dimensions, square footages, ceiling heights and measurements are approximate and may vary with construction. Illustrations and floor plans are artist's renderings, may depict features that are not standard and may not be available on all homes and all model types. Developer reserves the right to make changes to floor plans, specifications, dimensions and elevations without prior notice.

Preliminary floor plan. Conceptual artist's rendering for informational purposes only.

1,676 Square Feet of Living Area

- 2 Bedrooms
- 2 Baths
- Den
- 2 Car Garage